



Office of the President of the Philippines
GOVERNANCE COMMISSION
 FOR GOVERNMENT OWNED OR CONTROLLED CORPORATIONS
 3/F, BDO Towers Paseo, 8741 Paseo De Roxas, Makati City, Philippines 1228



05 March 2026

HON. GIOVANNI Z. LOPEZ
 Acting Secretary, Department of Transportation (DOTr)
 and LRTA Chairperson

HON. HERNANDO T. CABRERA
 Acting Administrator
LIGHT RAIL TRANSIT AUTHORITY (LRTA)
 1st Floor, Line 2 Depot
 Marcos Highway, Pasig City

**RE: TRANSMITTAL OF 2026 CHARTER STATEMENT AND
 STRATEGY MAP AND 2026 PERFORMANCE SCORECARD**

Dear Secretary Lopez and Administrator Cabrera,

This is to formally transmit the 2026 Charter Statement and Strategy Map (**Annex A**) and the 2026 Performance Scorecard (**Annex B**) of the **LIGHT RAIL TRANSIT AUTHORITY (LRTA)**, to be posted on the LRTA's website in accordance with Section 43 of GCG Memorandum Circular (M.C.) No. 2012-07.¹

The LRTA's proposed Charter Statement and Strategy Map were **RETAINED** while the Performance Scorecard submitted through a letter dated 27 October 2025² was **MODIFIED** based on: (i) the discussions made during the Technical Panel Meeting (TPM) held on 18 November 2025; (ii) evaluation of revised documents submitted through the LRTA's letters dated 01 December 2025³ and 09 February 2026;⁴ and (iii) agreements during the Performance Target Conference held on 03 March 2026.

Pursuant to Item 9 of GCG M.C. No. 2024-01,⁵ GOCCs are required to accomplish and submit the requisite Quarterly Monitoring Reports (*i.e.*, PES Form 4) for the calendar year detailing their progress in accomplishing their performance targets. The Quarterly Monitoring Reports shall likewise disclose any substantial changes in circumstances that were unforeseen during the TPM that may affect the timely achievement of the targets.

FOR THE LRTA'S INFORMATION AND COMPLIANCE.

Very truly yours,



ATTY. MARIUS P. CORPUS
 Chairperson

**ATTY. GERALDINE MARIE B.
 BERBERABE-MARTINEZ**
 Commissioner

¹ CODE OF CORPORATE GOVERNANCE FOR GOCCs, dated 28 November 2012.

² Officially received by the Governance Commission on 29 October 2025.

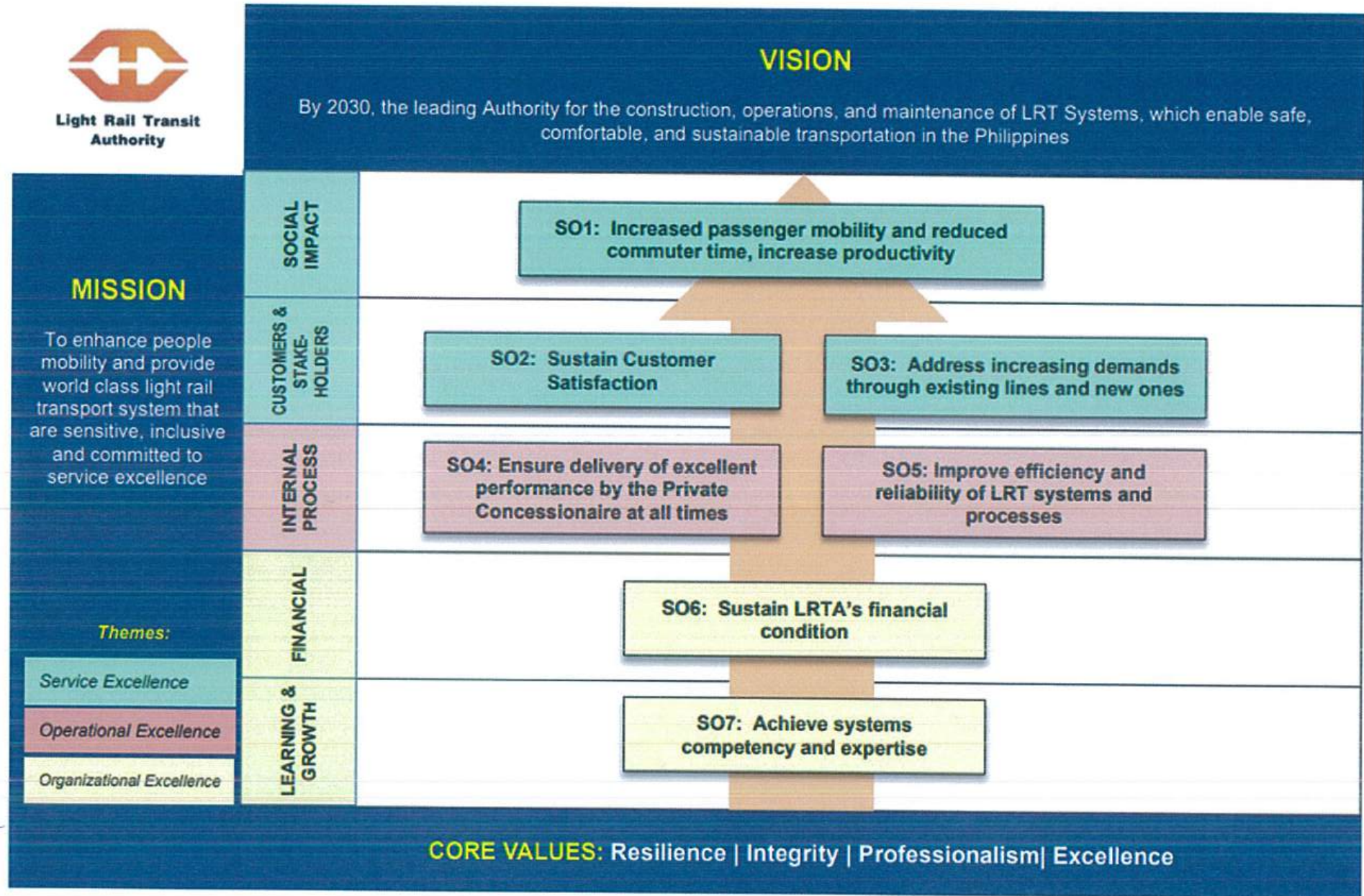
³ Officially received by the Governance Commission on 04 December 2025.

⁴ Officially received by the Governance Commission on 09 February 2026.

⁵ ENHANCED PERFORMANCE EVALUATION SYSTEM (PES) FOR THE GOCC SECTOR, dated 28 June 2024.



LIGHT RAIL TRANSIT AUTHORITY (LRTA)



LIGHT RAIL TRANSIT AUTHORITY (LRTA)

SOCIAL IMPACT	Component				Baseline		Targets		
	Objective/Measure	Formula	Wt.	Rating System	2023	2024	2025	2026	
SOCIAL IMPACT	SO 1	Increased Passenger Mobility and Reduced Commuter Time, Increase Productivity							
	SM 1	Passenger Ridership (in millions)	Absolute Figure (in Millions)	0.00%	Actual / Target	L1: 107.73	L1: 113.67	L1: 145	L1: 157
			Absolute Figure (in Millions)	9.00%	Actual / Target	L2: 49.43	L2: 53.29	L2: 57.15	L2: 60.62
		Sub-total	9.00%						
SO 2	Sustain Customer Satisfaction								
SM 2	Customer Satisfaction Survey (CSS) ¹	Number of Respondents who gave at least a Satisfactory rating / Total number of respondents	7.00%	Actual / Target 0% = if less than 80%	93.90%	97.60%	90%	90%	
SO 3	Address Increasing Demands through Existing Lines and New Ones								
CUSTOMERS/ STAKEHOLDERS	Line 1 South Extension Project								
	SM 3	a. Right-of-Way (ROW) Acquisition under Package 2	Number of lots acquired based on the Project Implementation Plan	5.00%	Actual / Target	N/A	N/A	N/A	Twenty-five (25) lots acquired ²
		b. Relocation of Utilities under Package 2	Number of utilities relocated/cleared based on the Project Implementation Plan	5.00%	Actual / Target	N/A	N/A	N/A	Eleven (11) utilities cleared/ relocated
	Line 2 West Extension Project								
SM 4	a. Relocation of Informal Settler Families (ISFs) Affected by ROW alignment	Actual Accomplishment	5.00%	All or Nothing	N/A	N/A	N/A	Board Approved MOA between LRTA and SHFC	

¹ Based on GCG – ARTA Joint Memorandum Circular No. 1, s. 2023. Covers external customers only.

² Under Section 11(d) of the Concession Agreement (CA) between LRTA and LRMC, these include (i) a title in the name of either of the Grantors or the Republic of the Philippines, (ii) a judicial order, such as Writ of Possession, injunction or mandatory order, allowing either of the Grantors or its agents to possess or occupy Basic ROW, (iii) an authorization from the relevant Government Authority allowing the Grantors or its agents to possess or occupy Basic ROW, or (iv) a contract evidencing that the land has been sold or donated to either of the Grantors or the Republic of the Philippines.

INTERNAL PROCESS	Component				Baseline		Targets		
	Objective/Measure	Formula	Wt.	Rating System	2023	2024	2025	2026	
		b. Appraisal of affected lots	Actual Accomplishment	2.00%	All or Nothing	N/A	N/A	N/A	Submission of Appraisal Report to DOTr
		Sub-total	24.00%						
	SO 4 Ensure Delivery of Excellent Performance by the Private Concessionaire at All Times								
	Compliance Rate of Concessionaire to Performance Commitments under Concessionaire Agreement between LRTA and LRMC								
	SM 5	a. Primary Key Performance Indicators	$\frac{\left(\frac{\%KPI1 + \%KPI2}{2} + \frac{\%KPI3 + \%KPI4}{3} \right)}{3}$	2.00%	Actual / Target 0% = if less than 80%	N/A	N/A	N/A	98.00%
		b. Secondary Key Performance Indicators	$\frac{\text{Total CNs minus CNs Unrectified and Rectified beyond TAT}}{\text{Total CNs}} \times 100\%$	6.00%	90.00 - 100.00 = 6% 80.00 - 89.99 = 3% Below 80.00 = 0%	98.36%	92.31%	100.00%	100.00%
		c. Safety Key Performance Indicators	$\frac{\text{Total Number of Complied Safety KPIs}}{\text{Total Number of Safety KPIs for the year}} \times 100\%$	2.00%	Actual / Target 0% = if less than 90%	N/A	N/A	N/A	100.00%
	SM 6	Compliance Rate of Concessionaire to Performance Commitments under Concessionaire Agreement between LRTA & AF Payments, Inc. (AFPI) ³	$\frac{\Sigma \text{ Numerical Rating / No. of Relevant Provisions}}{\text{Highest Numerical Rating}} \times 100\%$	8.00%	Actual / Target 0% = if less than 90%	99.37%	100.00%	100.00%	100.00%

³ Timeliness factor excluded.

	Component				Baseline		Targets		
	Objective/Measure	Formula	Wt.	Rating System	2023	2024	2025	2026	
INTERNAL PROCESS	SO 5 Improved Efficiency and Reliability of LRT Systems and Processes								
	SM 7	Number of Projects Completed for Improved Systems and Facilities	No. of projects completed (physical completion)	6.00%	Actual / Target	Three (3) projects 100% completed One (1) project 98.63% completed	N/A	One (1)	Three (3) ⁴
	SM 8	Line 2's Percentage of Systems Reliability	Actual Trips / Timetable of Trips	5.00%	Actual / Target 0% = if less than 90%	N/A	N/A	N/A	98.00%
	SM 9	Number of Operational Trains	Actual Number of Operational Trains for Commercial Use	2.00%	Actual / Target	N/A	N/A	N/A	Nine (9)
	Compliance with Quality Standards								
		a. ISO 9001:2015 Quality Management System (QMS)	Actual Accomplishment	5.00%	All or Nothing	ISO 9001:2015 Certified	Passed ISO QMS 9001:2015 1 st Surveillance Audit	Maintain ISO 9001:2015 Certification (Pass 2 nd Surveillance Audit)	Maintain ISO 9001:2015 Certification (Pass Re-Certification)
		b. ISO 45001:2018 Occupational Health and Safety (OHS)	Actual Accomplishment	3.00%	All or Nothing	Failed bidding for 3rd Party Certifying Body	- OHS Policy approved by the LRTA Administrator on 26 March 2024 - Railway Operations Safety Code and OHS Manual approved by LRTA Administrator on 23 December 2024 - Four (4) Safety Officers attended the 2 trainings required for the OSH Practitioner Certification -- the LCM and HIRAC trainings	Procurement of Third-Party Certifying Body	ISO 45001:2018 Certification
	SM 10								
				Sub-total	39.00%				

⁴ (1) Acquisition of Wheel Lathe Machine, (2) Systematic Replacement of AC on Mainline Stations, and (3) Acquisition of Train Lift.

FINANCIAL	Component				Baseline		Targets	
	Objective/Measure	Formula	Wt.	Rating System	2023	2024	2025	2026
	SO 6	Sustain LRTA's Financial Condition						
SM 11	Line 2 Fare Revenues (in billion pesos)	Transportation System Fees line item found in COA-Audited LRTA Financial Statements	7.00%	Actual / Target	1.096	1.274	1.348	1.212
SM 12	Budget Utilization Rate (BUR)							
	a. GAA Subsidies – Amounts Obligated (Current)	Total Obligated Subsidy / Total COB from GAA Subsidy (Both Net of PS Cost)	0.50%	Actual / Target	44.94%	58.51%	90%	90%
	b. GAA Subsidies – Amounts Obligated (Carry-over)	Total Obligated Subsidy / Total COB from GAA Subsidy (Both Net of PS Cost)	0.50%	Actual / Target				90%
	c. GAA Subsidies – Amounts Disbursed (Current)	Total Disbursement / Total Obligated GAA Subsidy (Both Net of PS Cost)	1.00%	Actual / Target	37.94%	23.76%	90%	90%
	d. GAA Subsidies – Amounts Disbursed (Carry-over)	Total Disbursement / Total Obligated GAA Subsidy (Both Net of PS Cost)	1.00%	Actual / Target				90%
	e. Disbursement Rate of Internally Generated Fund (IGF)	Total Disbursement from IGF / Total COB from IGF (Both Net of PS Cost)	2.00%	Actual / Target	61.26%	56.92%	90%	90%
	f. Disbursement Rate of DOTr-Downloaded Funds	Total Disbursement / Total DOTr-Downloaded Funds Programmed for Utilization for the Year	1.00%	Actual / Target	N/A	N/A	N/A	90%
SM 13	Collection Efficiency Rate	Total Actual Collection for the Year / Total Amount for Collection for the Year	6.00%	Actual / Target	99.73%	100%	90%	96%
		Sub-total	19.00%					

LEARNING AND GROWTH	Component				Baseline		Targets	
	Objective/Measure	Formula	Wt.	Rating System	2023	2024	2025	2026
	SO 7	Achieve Systems Competency and Expertise						
SM 14	Percentage of Employees with Required Competencies Met	Plantilla Employees Meeting Their Required Competencies / Total Number of Filled Plantilla as of Yearend	6.00%	All or Nothing	88.13%	89.53%	Improvement from the 2024 Actual Accomplishment provided it is not 88.13 or below	Improvement from the 2025 Baseline
SM 15	Development and Implementation of Disaster Risk Reduction and Management (DRRM) Plan	Total Number of Exercises/ Drills/Tests Conducted in 2026 over Total Number of Exercises/Drills/Tests Scheduled in 2026	3.00%	Actual / Target	N/A	N/A	Board-Approved Public Service Continuity Plan (PSCP)	Implementation of Public Service Continuity Plan (PSCP)
		Sub-total	9.00%					
		TOTAL	100%					

BONUS STRATEGIC MEASURES AND TARGETS								
FINANCIAL	Component				Baseline		Targets	
	Objective/Measure	Formula	Wt.	Rating System	2023	2024	2025	2026
		GAD Budget Utilization Rate	Actual Disbursement for GAD-related Activities over Total COB	1%	All or Nothing	N/A	N/A	5% of Total Budget

For GCG:


ATTY. MARIUS P. CORPUS
Chairperson

FOR LRTA:


HON. HERNANDO T. CABRERA
Administrator