



## Status Report of LRTA's Key Projects as of April 30, 2024

### Program:

#### Systems and Facilities Improvement, Rehabilitation, and Modernization Program

- LRT Lines 1 and 2 Rehabilitation Projects

### Brief Project Description:

The program involves major repair/rehabilitation of existing lines 1 and 2 Systems. It aims to address the problems of deteriorating rolling stocks, tracks, and facilities. This initiative aims to increase the number of running trains/LRVs and to further enhance the capacity, safety, and reliability of the LRT systems.

**Total Project Cost:** PHP 11.497B

**Project Timeline:** 2011-2028

**Funding Sources\*:** GAA 2011, 2013, 2014, 2015, 2016, 2018, 2019, 2020, 2021, 2022, 2023 and 2024

### Overall Status as of the period

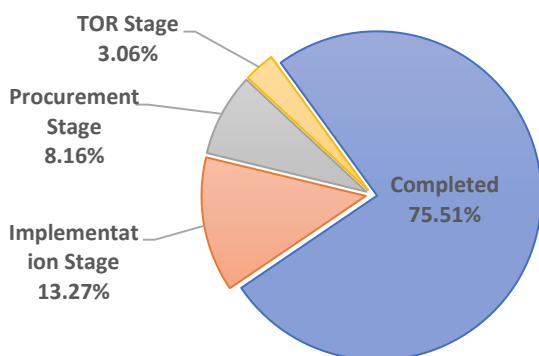
#### Physical

<b>Total Number of Projects</b>	98	Delayed completion and implementation of some projects due to the following: <ul style="list-style-type: none"> <li>• Implementation of IATF Protocols during the pandemic (Suspension of work, halting/stoppage of the delivery of imported materials/parts, including the arrival/entry of expatriates)</li> <li>• Legal issues that resulted in the termination of some contracts, blacklisting of contractors, and filing of cases on alleged anomalous transactions/ implementation</li> </ul>
<b>Completed</b>	74	
<b>Implementation Stage</b>	13	
<b>Procurement Stage</b>	8	
<b>TOR/PR Stage:</b>	3	

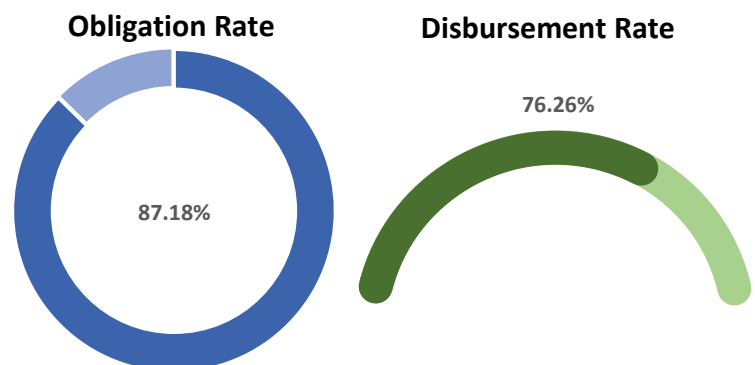
#### Financial \*

<b>Total Allotment</b>	PHP 11.497 B
<b>Obligated</b>	PHP 10.024 B
<b>Disbursed</b>	PHP 7.644 B

### Physical Accomplishment



### Financial Accomplishment \*



\* Financial Status is based on the 2024 1st Quarter Accomplishment. Posting of updates will be on a quarterly basis, one (1) month after every quarter/period under review.

**Project Photos**  
**(Highlighting activities/accomplishments for the period covered)**

---

**Systematic Replacement of All Roll-up Grilles at Line 2 Stations**



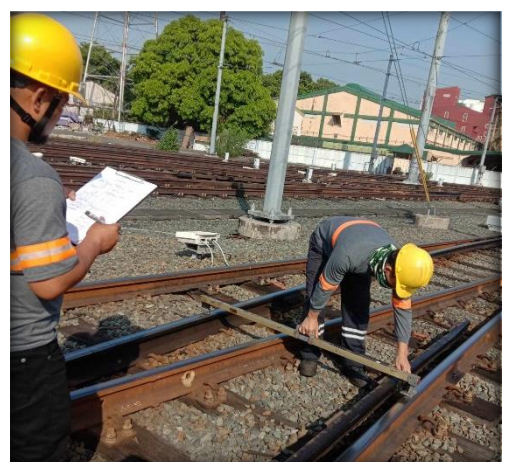
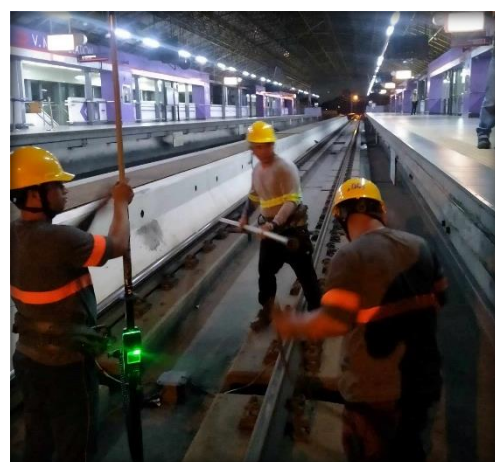


## Comprehensive Maintenance of Conveyance System





## Maintenance of Line 2 System



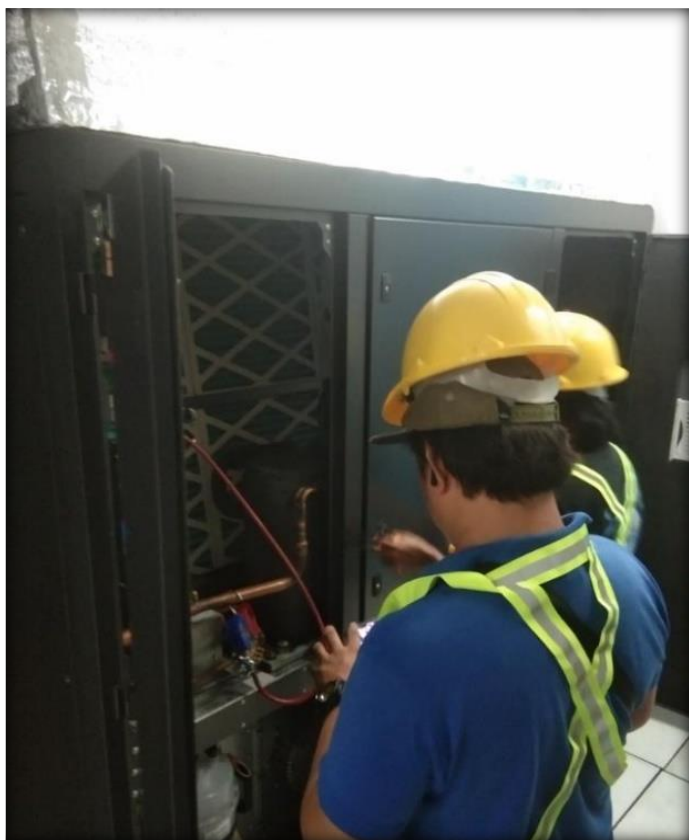
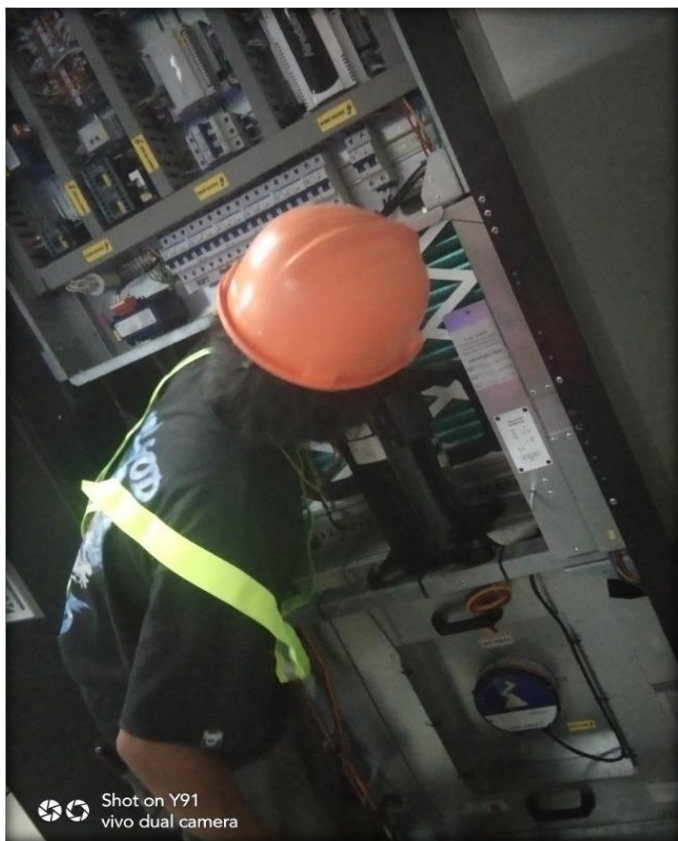


## AFCS Maintenance – Line 2 East Extension (Marikina and Antipolo Station)





## Replacement of Precision Air Conditioning System at Depot





## Consulting Services for the LRT Line 2 Capacity Expansion Project



Overhead Catenary System



OCS Wayside Area



Rectifier Substations



Maintenance activities



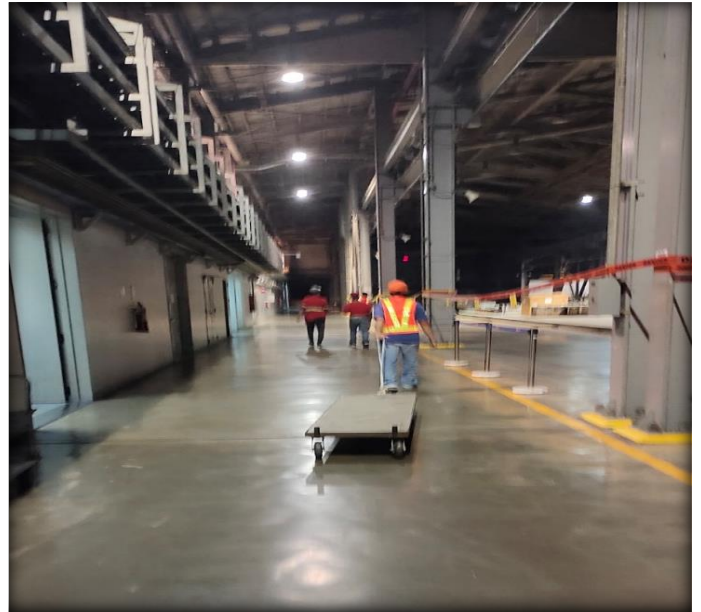
Protection relays



OCC Workstation for SCADA

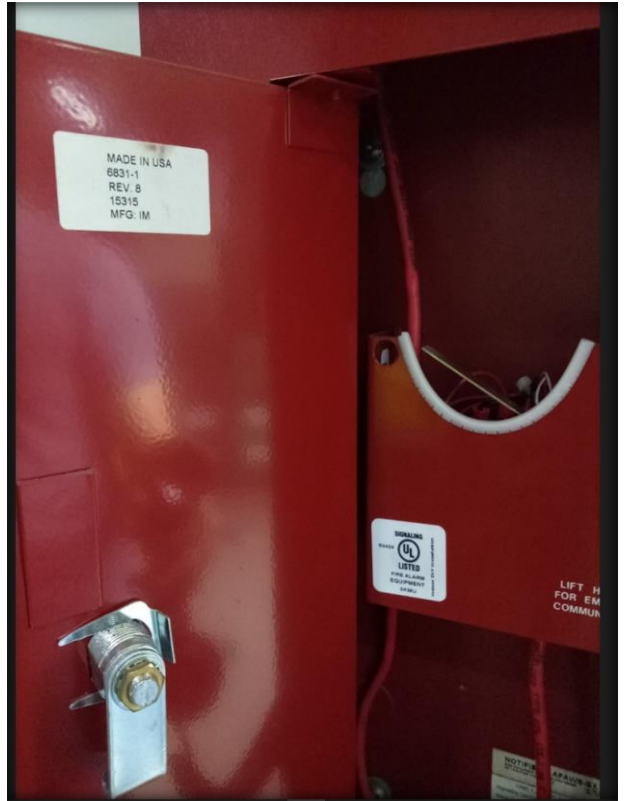


## Improvement of Line 2 Depot





## Rehabilitation of Fire Detection and Alarm System, and Fire Suppression System





## LRTA MONTHLY PROJECT STATUS REPORT



### Status Report of LRTA's Key Projects (as of April 30, 2024)

#### LRT EXTENSION PROJECTS

##### Project Title: Line 2 East Extension Project

**Brief Project Description:** Extension of the existing LRT Line 2 by 3.793km eastward from the existing Santolan Station at Marcos Highway, terminating at the intersection of Marcos Highway and Sumulong Highway.

**Total Project Cost:** Php 9.511 B (NEDA Approved)

GPH: Php 6.398 B

ODA: Php 3.113 B

**Project Timeline:** Operation date (*Partial Operation*) – July 5, 2021  
(*Full Operation*) – September 3, 2021

**Extension Route Length:** 3.793 km

**No. of Trainsets/LRVs (if applicable):** No new Trainsets and LRVs procured.

**No. of Stations:** Additional two (2) stations



##### Financing Arrangement:

Through National Government Subsidy appropriation and Official Development Assistance (ODA) from the Japanese International Cooperation Agency (JICA)

##### Project Alignment:





<b>Overall Status as of the period (in %):</b>	
<b>Physical</b> <b>99.99%</b> Completed. Ongoing supervision of defects liability claims	<b>Financial (Disbursement)</b> <b>Local: Php 3,986.126 M</b> <b>Foreign: Php 3,193.115 M</b>
<b>Project Photos (Highlighting activities/accomplishments for the period covered)</b>	
 	
<i>April Revenue Operations</i>	
<b>Issues/Concerns and Action/s taken</b>	
<b>Issues</b>  <b>On Package 2- Design and Build of Stations</b> <ul style="list-style-type: none"> <li>Delay in construction work due to manpower constraints.</li> </ul> <b>On Package 3- Design and Build of Track works and EMS</b> <ul style="list-style-type: none"> <li>Delay in testing and commissioning due to interface issues.</li> </ul>	<b>Actions taken.</b> <ul style="list-style-type: none"> <li>Continuous coordination with the consultant and contractor</li> <li>Continuous communication with the Engineering Department regarding the restoration</li> </ul>





## Status Report of LRTA's Key Projects (as of April 30, 2024)

### LRT EXTENSION PROJECTS

#### Project Title: Line 2 West Extension Project

**Brief Project Description:** The project involves the design and construction of the extension for the existing LRT Line 2, with a total length of approximately 3.02 kms from the Recto station extending westward to the Pier 4 area including the turn back track.

**Total Project Cost:** Php 10.118 B (NEDA Approved)

**Project Timeline:** 3<sup>rd</sup> Quarter 2019 to 3<sup>rd</sup> Quarter of 2026 (excluding DLP)

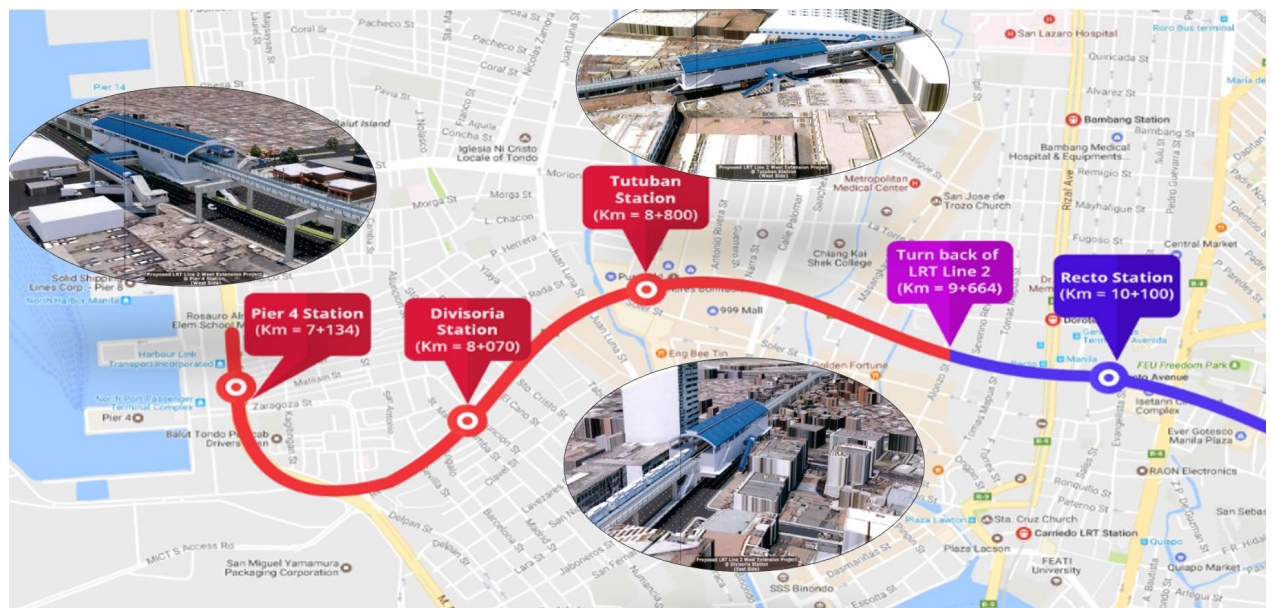
**Extension Route Length:** 3.02 kms

**No. of Trainsets/LRVs (if applicable):** Five (5) 4-car Trains or 20 Light Rail Vehicles (LRVs)

**No. of Stations:** Three (3) Stations

**Financing Arrangement:** Through National Government Subsidy Appropriation

#### Project Alignment:



**Overall Status as of the period (in %):**



<b>Physical</b> <b>1.39% Completed.</b>	<b>Financial (Disbursement)</b> <b>Php 124.169 M</b>
<b>Issues/Concerns and Action/s taken</b>	
<b>Issues</b> <ul style="list-style-type: none"> <li>• Approval and issuance of Multi-Year Contracting Authority (MYCA).</li> <li>• Possible relocation of affected ISFs inside the PPA premises and along Recto Avenue</li> <li>• PPA, PNR, TRB and DPWH's "No Objection" to the revised alignment</li> <li>• PPA might request disruption compensation for possible issues that may arise and may cause disruption to the operations of PPA and port operators once the construction commenced.</li> </ul>	<b>Actions Taken</b> <ul style="list-style-type: none"> <li>• The 3<sup>rd</sup> revised alignment was recommended to the Administrator on 25 April 2024, for his approval.</li> <li>• DOTr-PIU in coordination with LRTA-PMO is currently preparing a letter in response to DBM's letter.</li> <li>• A 4<sup>th</sup> technical coordination meeting was conducted between DOTr, LRT PIU, LRTA PMO, TRB, SMC and Matiere at the LRTA Boardroom on 31 May 2023. All parties agreed and signed the final interface design. DOTr to request officially for No Objection to the Final Interface Design to TRB, LRTA and DPWH</li> <li>• Courtesy call meeting was conducted between DOTr, LRTA and WJV at the Manila Urban Settlement Office on 22 February 2023</li> <li>• Ground marking activities for the columns and viaduct edge line along the Zaragosa-Asuncion segment and the proposed three stations was conducted on July 12 to 19, 2023.</li> <li>• The Toll Regulatory Board issued their No Objection to the project alignment on July 28, 2023</li> </ul>





## Status Report of LRTA's Key Projects (as of April 30, 2024)

### LRT EXTENSION PROJECTS

#### Project Title: Line 1 South Extension Project

**Brief Project Description:** The project involves the extension of the existing 20.7 km. with approximately 10.5 km as elevated and 1.2 km at-grade, expansion of the Baclaran Depot and the acquisition of trainsets.

**Total Project Cost:** PHP 64.915 B (NEDA Approved)

GPH: PHP 7.551 B

ODA: PHP 17.799 B

PS: PHP 39.565 B

**Project Timeline:** 4th Quarter 2017 to 4th Quarter 2027

**Extension Route Length:** 11.7 km.

**No. of Trainsets/LRVs (if applicable):** 30 4-car Trains or 120 Light Rail Vehicles (LRVs)

**No. of Stations:** Eight (8) stations with a provision of two (2) additional stations

#### Financing Arrangement:

Public-Private Partnership (PPP) with GOP/Public sector (PS) components through Official Development Assistance (ODA) from the Japanese International Cooperation Agency (JICA) and National Government Subsidy Appropriation. The private component is through the private concessionaire, the Light Rail Manila Corporation

#### Project Alignment:



#### Overall Status as of the period (in %):

##### Physical

90.45% completed (Grantor's Component)

98.32% completed (Private

Sector/Concessionaire's Component)

##### Financial (Disbursement)

Local: Php 10,487.01 M

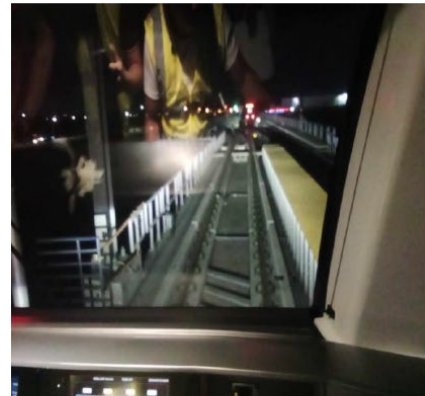
Foreign: Php 14,936.70 M



## Project Photos (Highlighting activities/accomplishments for the period covered)



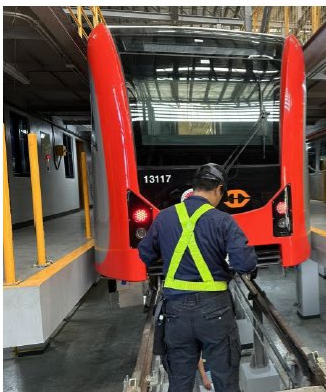
LRTC Cavite Extension Works – ROW Package 1



03 April 2024 : Dynamic Test without Timetable and Safety Qualification test at Cavite Extension Works



Procurement of 120 new Rolling Stock Light Rail Vehicles (LRVs) – 4<sup>th</sup> Generation



08 April 2024 : Post Delivery Inspection of G4 Trainset 30

## Issues/Concerns and Action/s taken

### Issues

#### On the supply of 120 New Rolling Stock LRVs -4<sup>th</sup> Generation

- Delay in the delivery of Gen 4 trains because of the non-availability of stabling tracks in Baclaran Depot

#### On ROWA Issues

- Delay in the acquisition of ROW expropriation concerns regarding land valuation

### Actions Taken

- Temporary relocation of Gen 1 LRVs to accommodate Gen 4 LRVs
- LRTA-PMO filed motion for the issuance of Writ-of-Possession (WOP) to the court for expropriation cases.